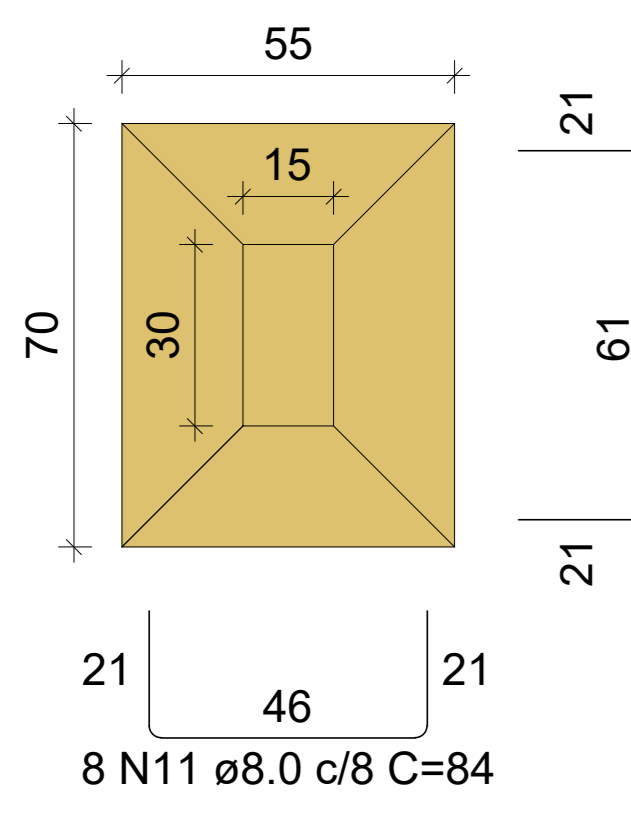


peso específico = 1600.00 kg/m³

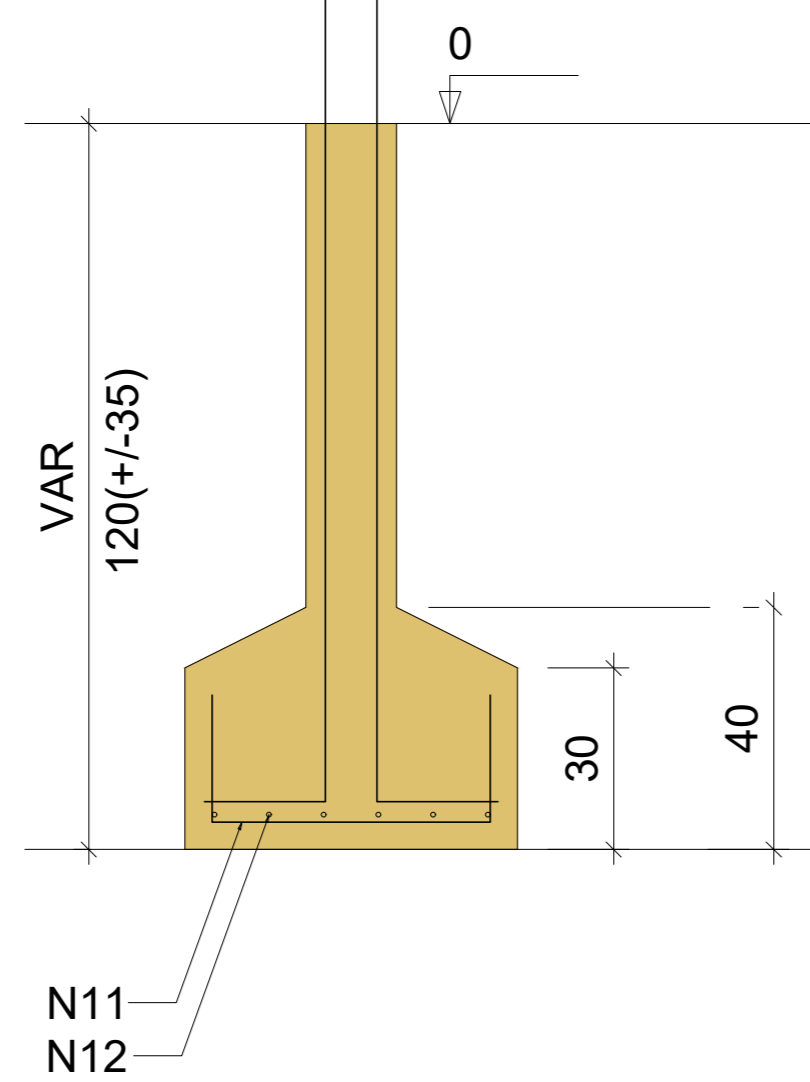
**S24=S25=S26=S27=S29=S30=S36=S37=S73**

PLANTA  
ESC 1:25



Solo com capacidade de suporte > 1.00 kgf/cm²  
Solo compactado sobre a sapata  
peso específico > 1600.00 kgf/m³

CORTE  
ESC 1:25



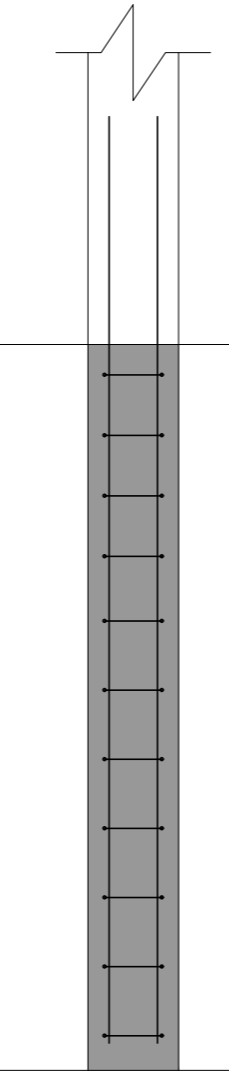
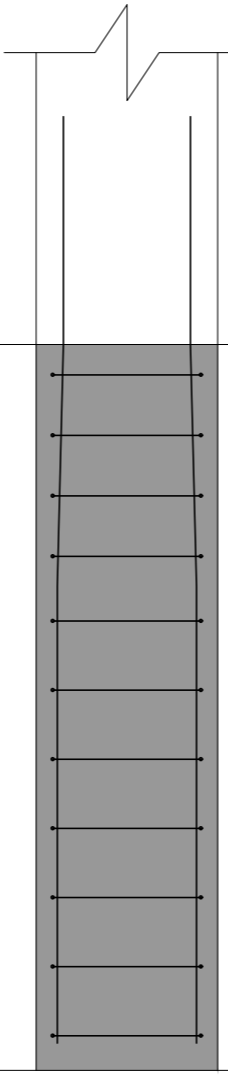
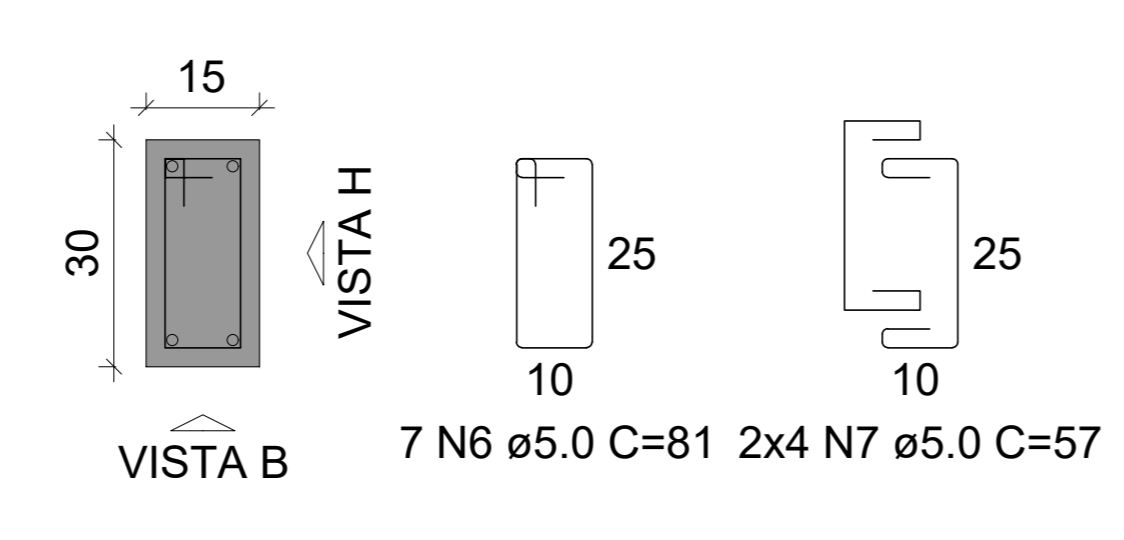
**P24=P25=P26=P27=P29=P30=P36=P37**

VISTA H  
ESC 1:25

VISTA B  
ESC 1:25

FUNDACAO - L1

SEÇÃO  
ESC 1:20



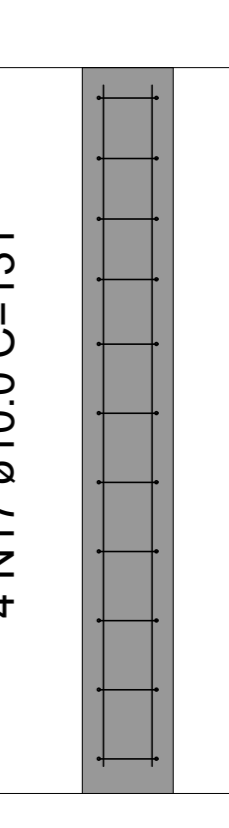
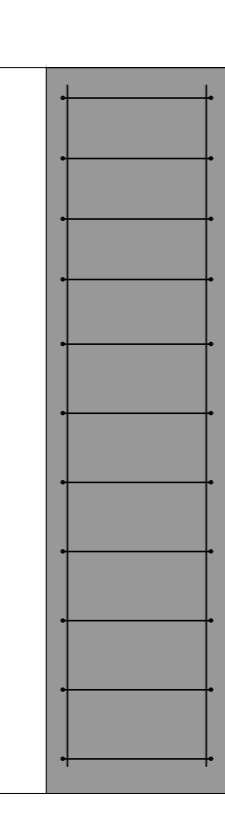
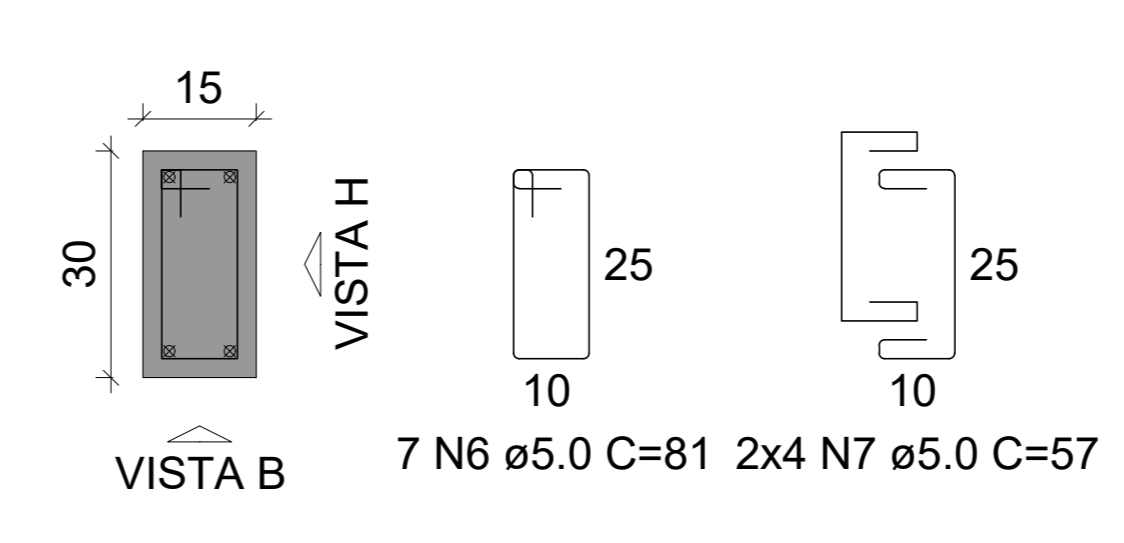
**P73**

VISTA H  
ESC 1:25

VISTA B  
ESC 1:25

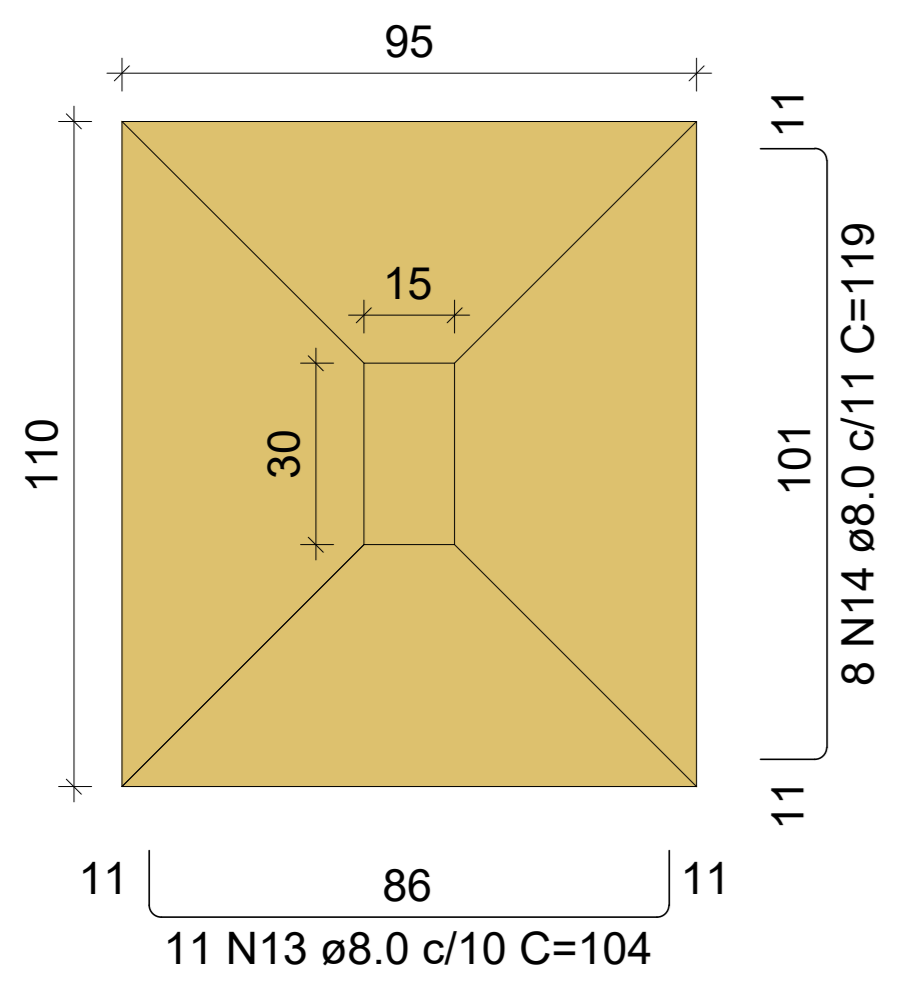
FUNDACAO - L1

SEÇÃO  
ESC 1:20



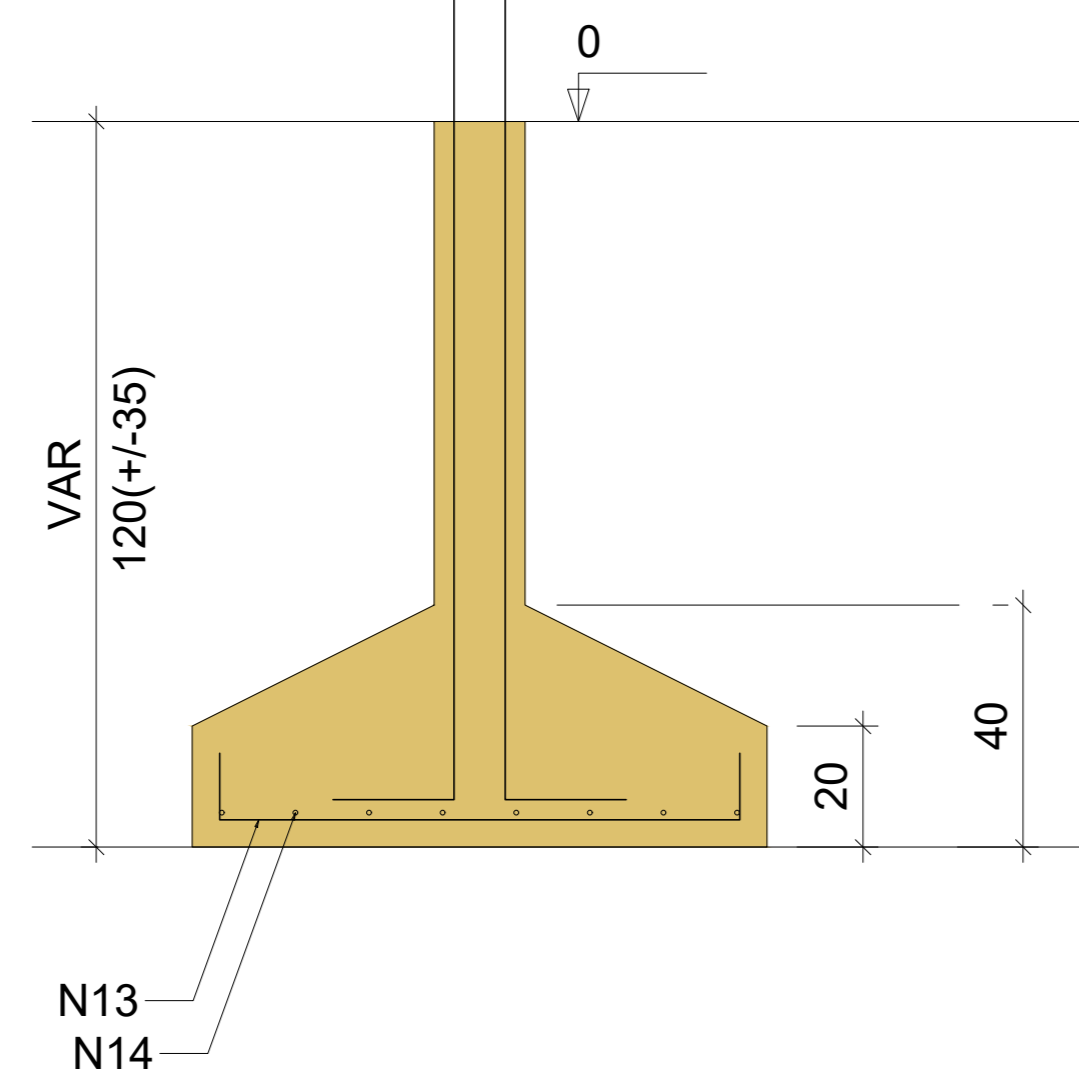
**S28**

PLANTA  
ESC 1:25



Solo com capacidade de suporte > 1.00 kgf/cm²  
Solo compactado sobre a sapata  
peso específico > 1600.00 kgf/m³

CORTE  
ESC 1:25



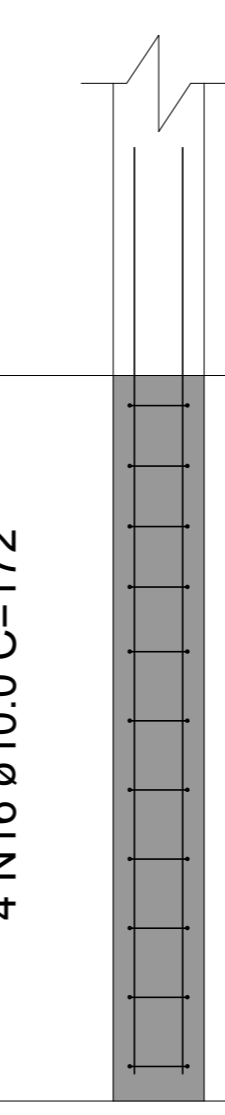
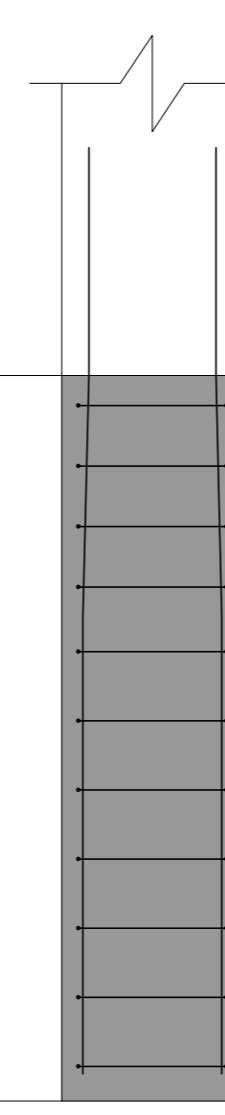
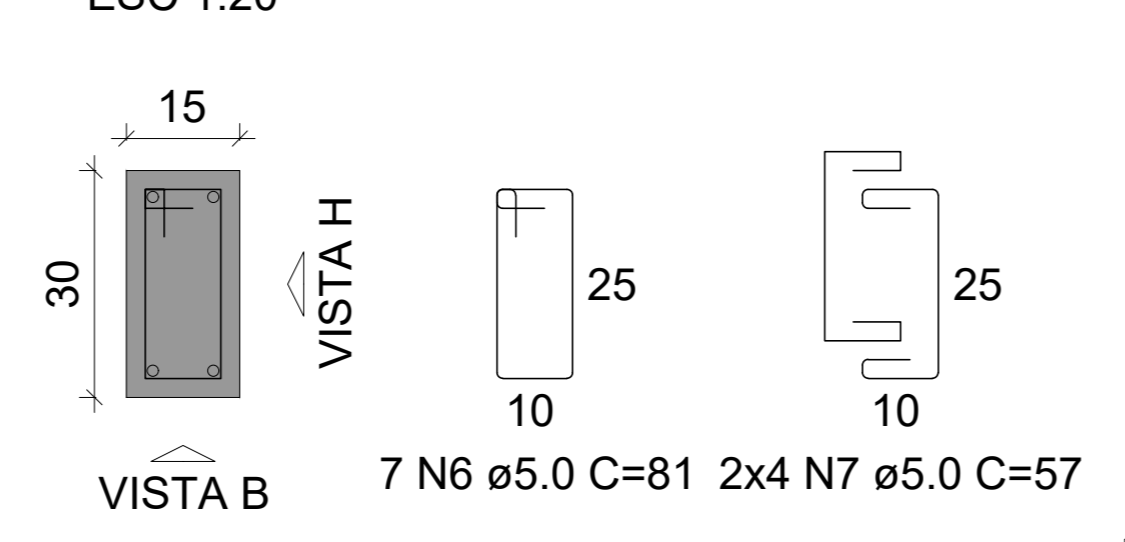
**P28**

VISTA H  
ESC 1:25

VISTA B  
ESC 1:25

FUNDACAO - L1

SEÇÃO  
ESC 1:20



**RELAÇÃO DO AÇO**

P15	2xP17	2xP23
8xP24	P28	P38
4xP63	P73	S15
6xS17	2xS23	9xS24
S28	S38	

AÇO	N	DIAM (mm)	QUANT	C.UNIT (cm)	C.TOTAL (cm)
CA60	1	5.0	44	30	1320
	2	5.0	7	231	1617
	3	5.0	8	137	1096
	4	5.0	44	111	4884
	5	5.0	12	87	1044
	6	5.0	91	81	7371
	7	5.0	104	57	5928
CA50	8	8.0	8	174	1392
	9	8.0	18	94	1692
	10	8.0	14	109	1526
	11	8.0	72	84	6048
	12	8.0	60	99	5940
	13	8.0	11	104	1144
	14	8.0	8	119	952
	15	8.0	7	89	623
	16	10.0	60	172	10320
	17	10.0	4	131	524
	18	10.0	11	98	1078
	19	10.0	96	133	12768
	20	12.5	24	180	4320

**RESUMO DO AÇO**

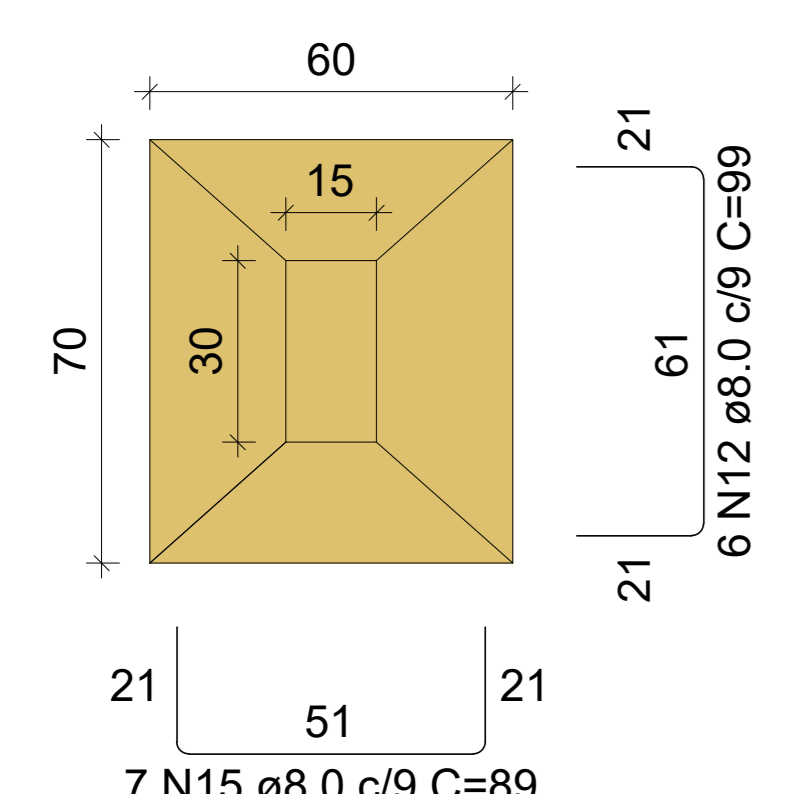
AÇO	DIAM (mm)	C.TOTAL (m)	PESO + 10% (kg)
CA50	8.0	193.2	83.8
	10.0	246.9	167.4
	12.5	43.2	45.8
CA60	5.0	232.6	39.4

PESO TOTAL (kg)	
CA50	297.1
CA60	39.4

Volume de concreto (C-25) = 5.77 m³  
Área de forma = 35.48 m²

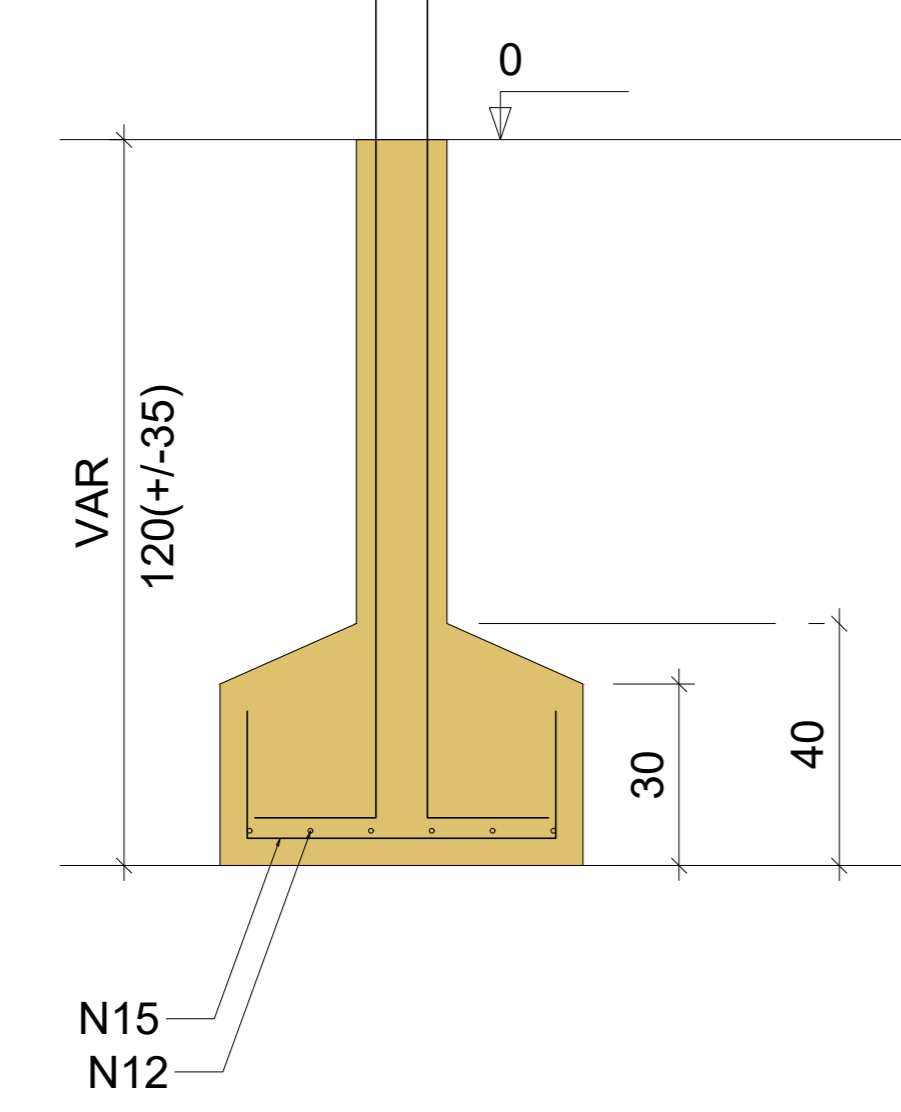
**S38**

PLANTA  
ESC 1:25



Solo com capacidade de suporte > 1.00 kgf/cm²  
Solo compactado sobre a sapata  
peso específico > 1600.00 kgf/m³

CORTE  
ESC 1:25



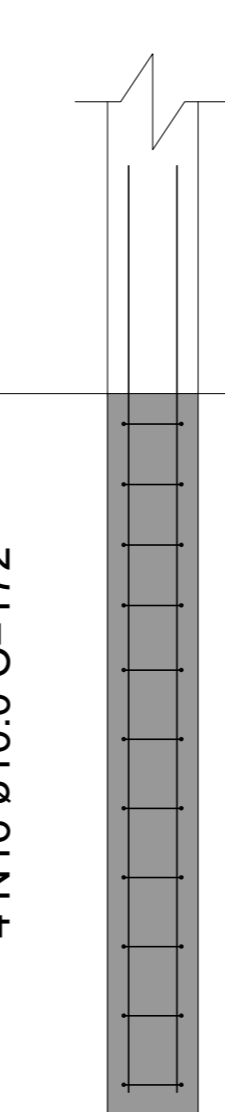
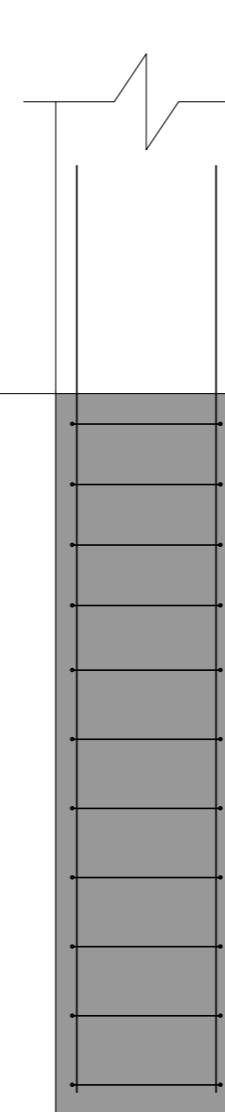
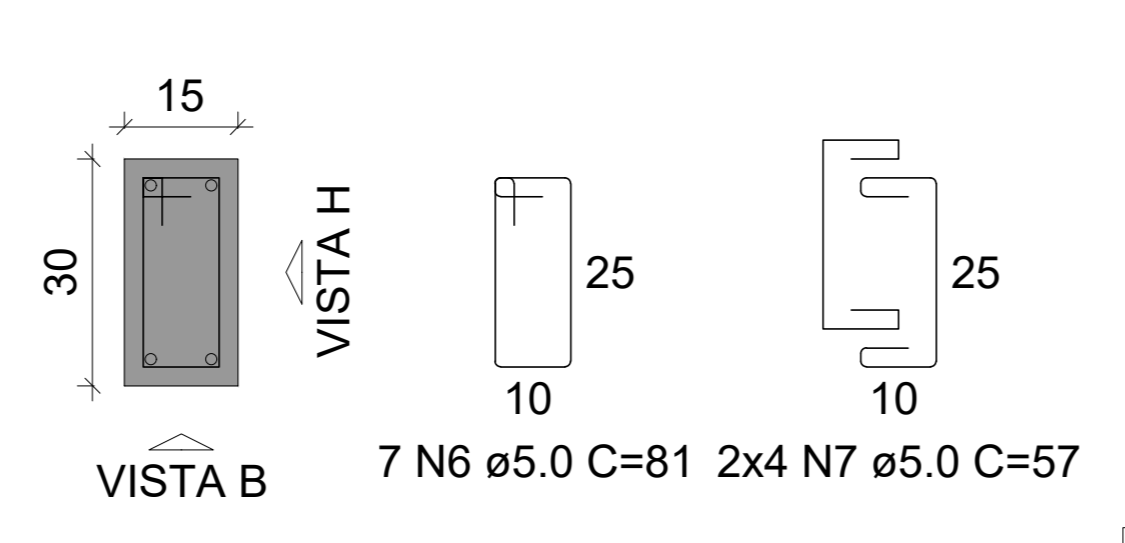
**P38**

VISTA H  
ESC 1:25

VISTA B  
ESC 1:25

FUNDACAO - L1

SEÇÃO  
ESC 1:20



07.00 SAPATAS - ARMADURAS  
ESCALA: 1:10

REVISÃO Nº	PROJETO ESTRUTURAL	DESCRIÇÃO
PROJETO	CENTRO DE INOVAÇÃO E DIFUSÃO DE TECNOLOGIAS PARA O SEMIÁRIDO (CIDTS) - CAMPUS BOA VIAGEM	
CLIENTE	IFCE CAMPUS DE BOA VIAGEM - CE	
LOCAL	MUNICÍPIO DE BOA VIAGEM - CE	REGIÃO
CONTEÚDO	SAPATAS - ARMADURAS	RESPONSÁVEL TÉCNICO: GEORDANO CARVALHO
		PROJETISTA E ARQUITETA: GEORDANO PINHEIRO
		DESENHISTA: GEORDANO PINHEIRO
DATA	OUTUBRO/2024	ESCALA INDICADA
ARQUIVO	P6_7_SAPATAS.dwg	FOLHA 07/28