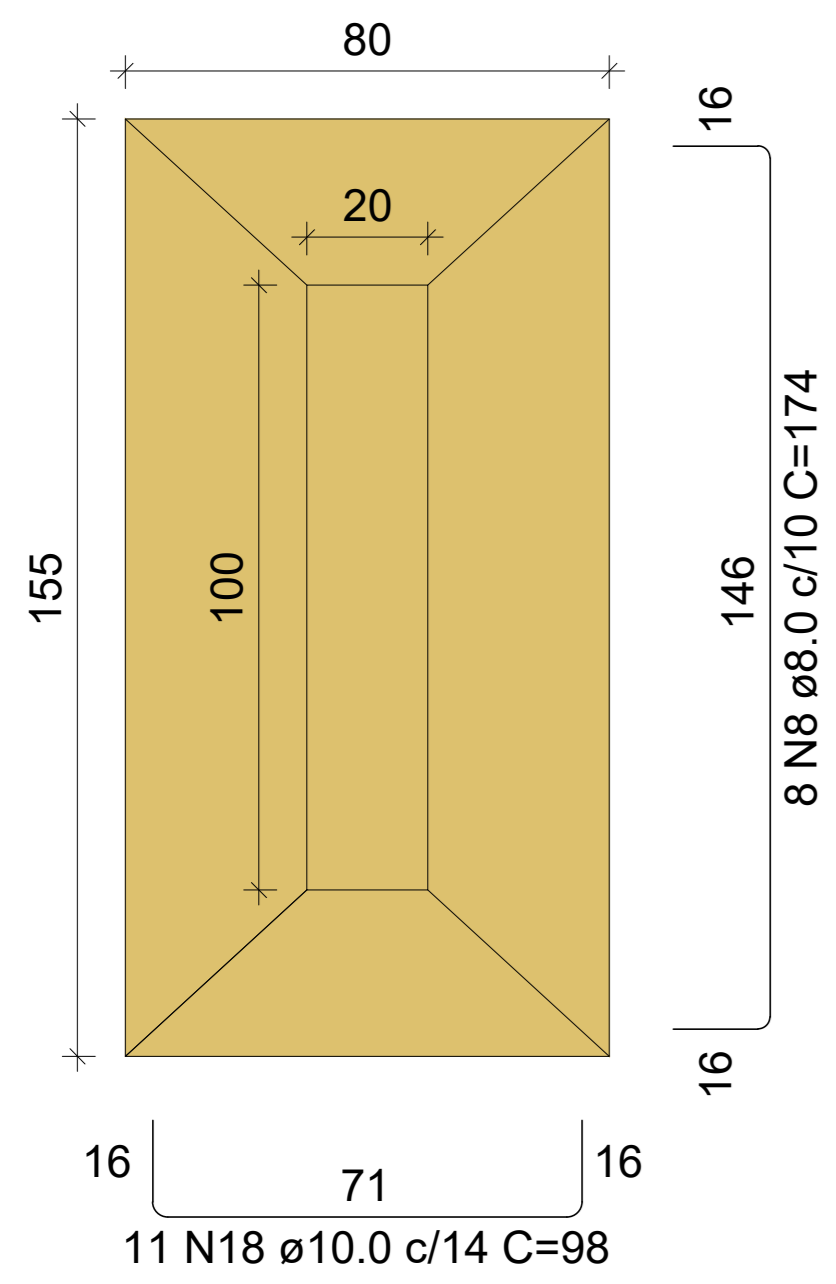
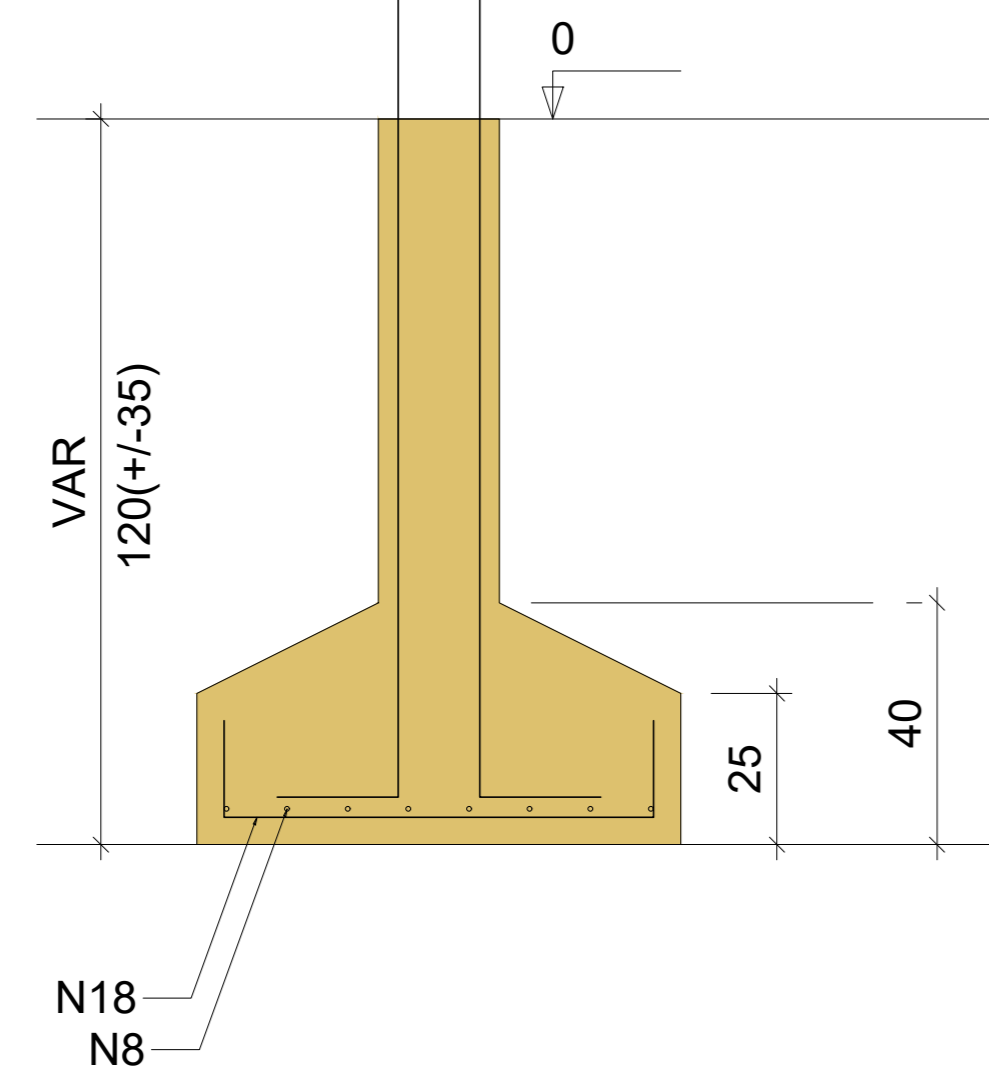


S15
PLANTA
ESC 1:25



Solo com capacidade de suporte > 1.00 kgf/cm²
Solo compactado sobre a sapata
peso específico > 1600.00 kgf/m³

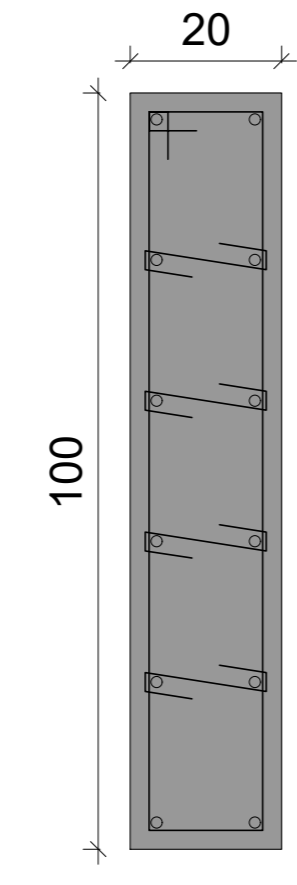
CORTE
ESC 1:25



P15

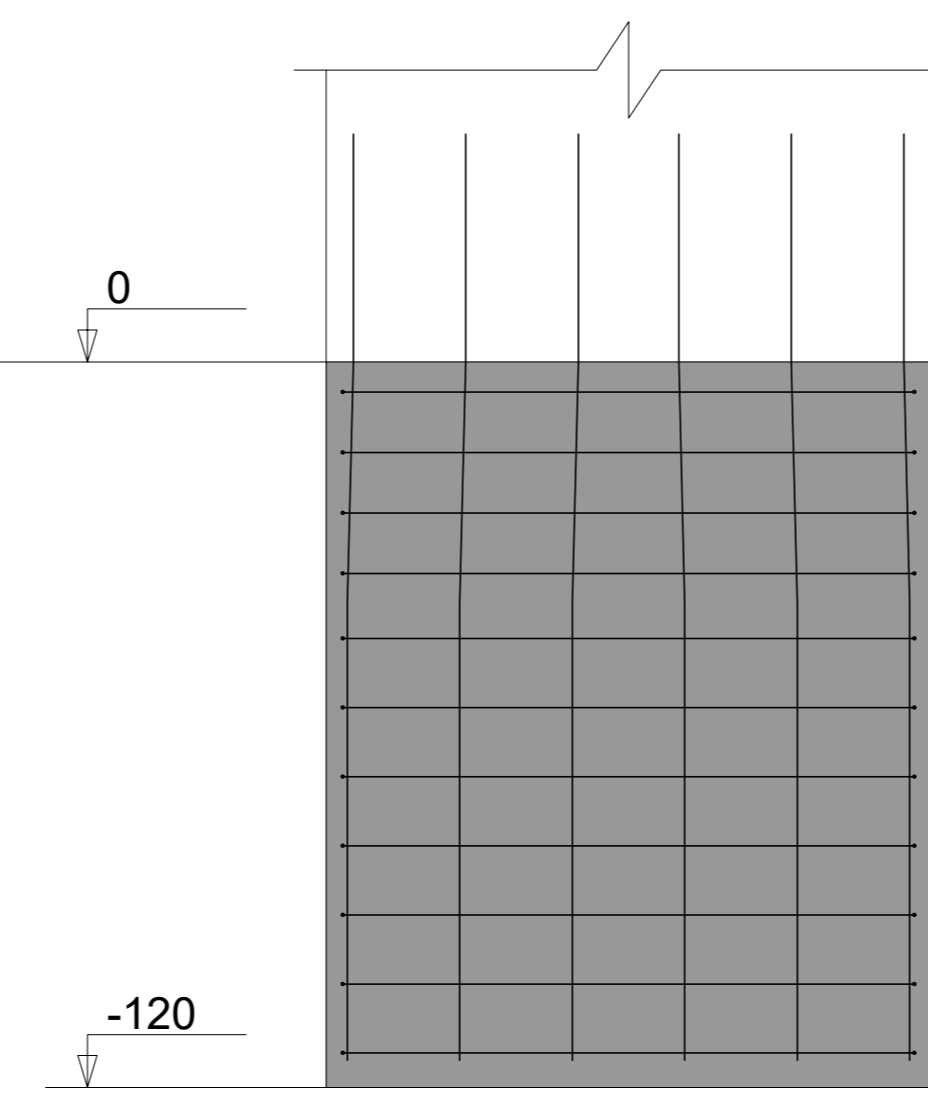
FUNDAÇÃO - L1

SEÇÃO
ESC 1:20

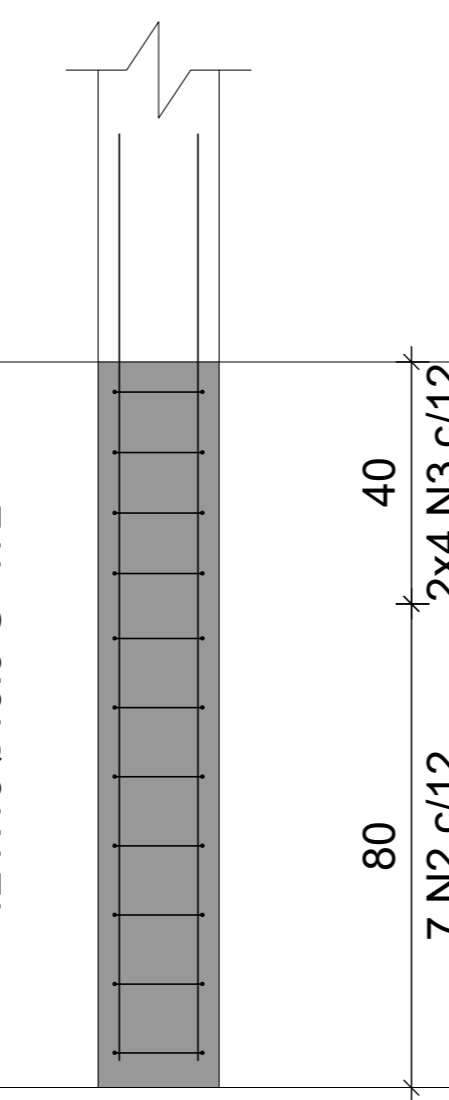


7 N2 ø5.0 C=231 2x4 N3 ø5.0 C=137
4x7 N1 ø5.0 C=30
4x4 N1 ø5.0 C=30

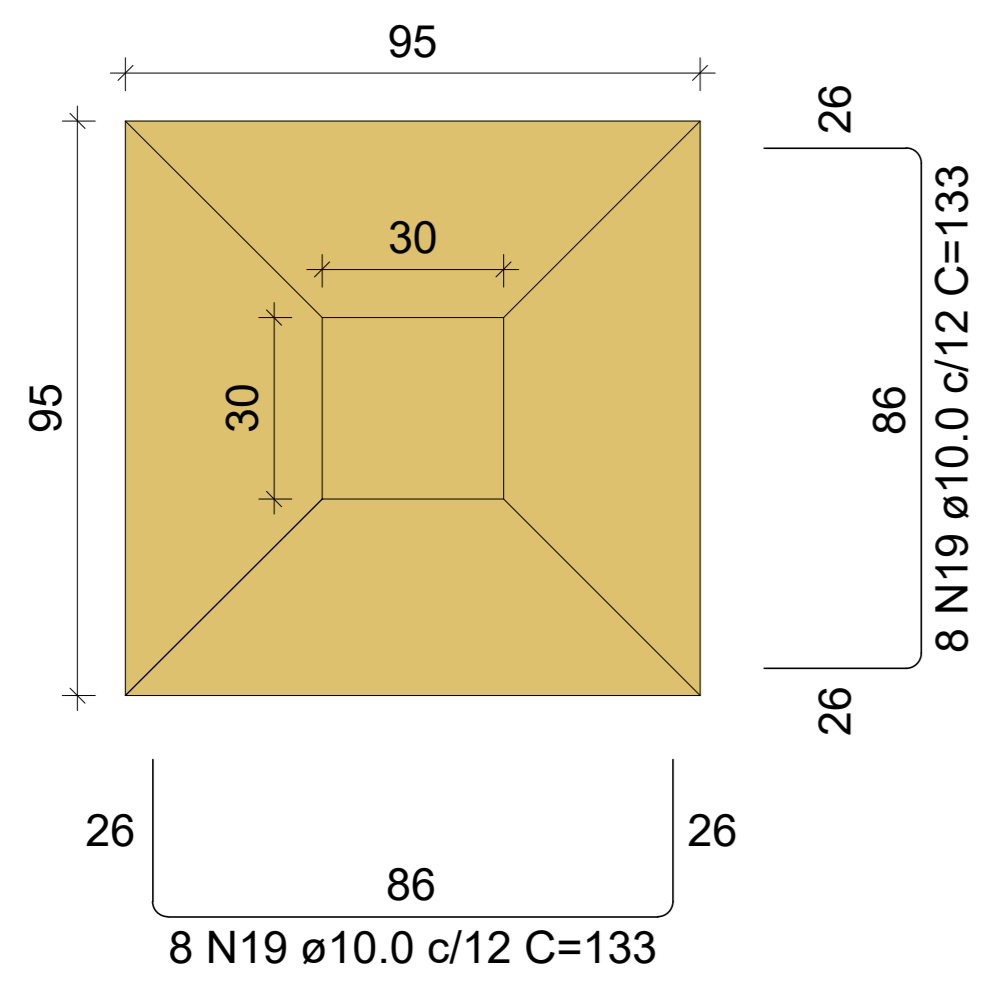
VISTA H
ESC 1:25



VISTA B
ESC 1:25

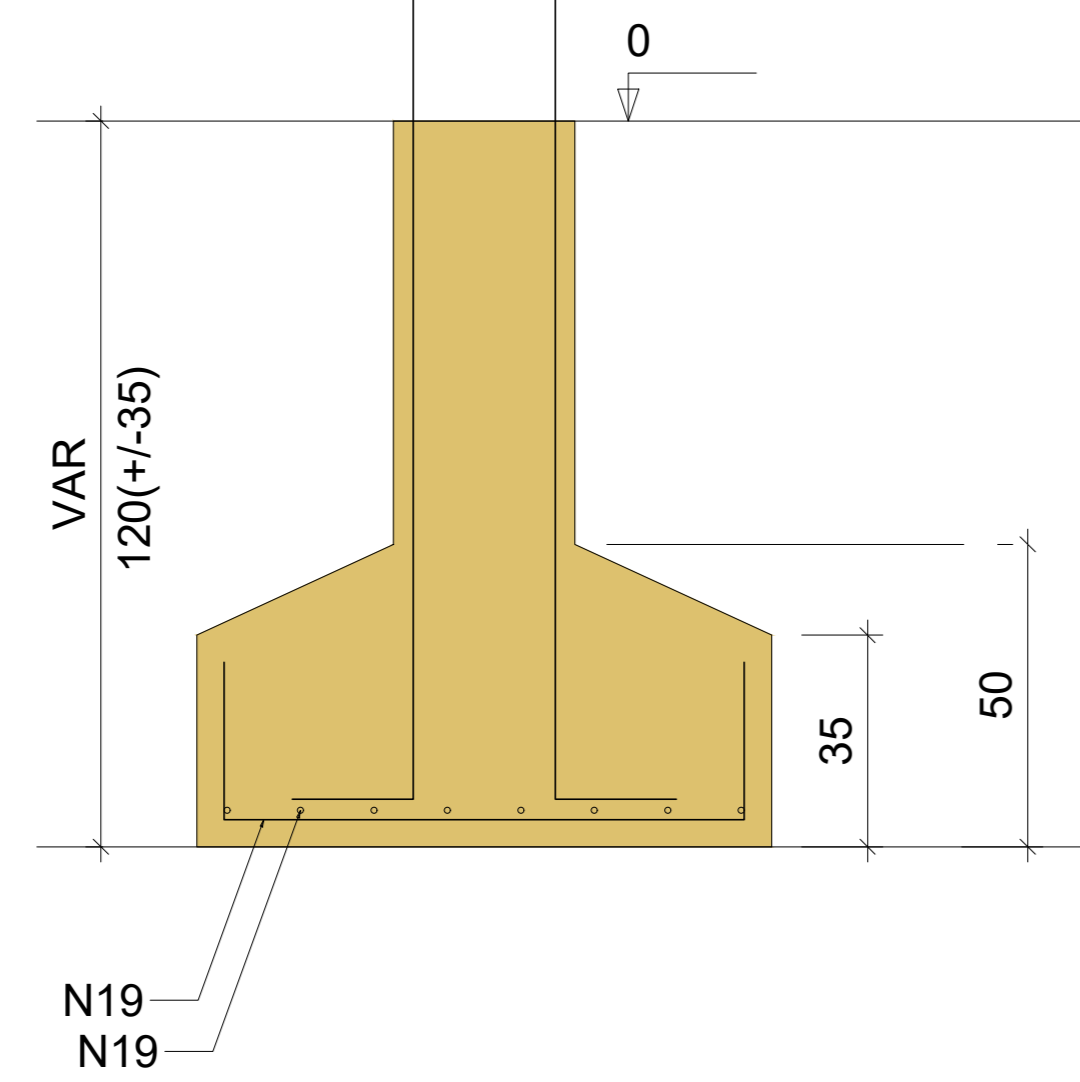


S17=S51=S63=S65=S66=S67
PLANTA
ESC 1:25



Solo com capacidade de suporte > 1.00 kgf/cm²
Solo compactado sobre a sapata
peso específico > 1600.00 kgf/m³

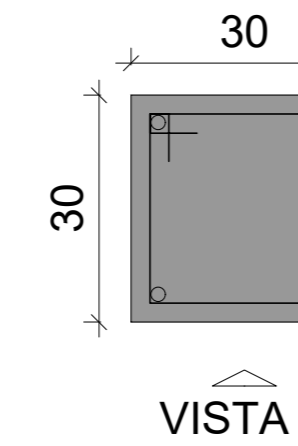
CORTE
ESC 1:25



P17=P51

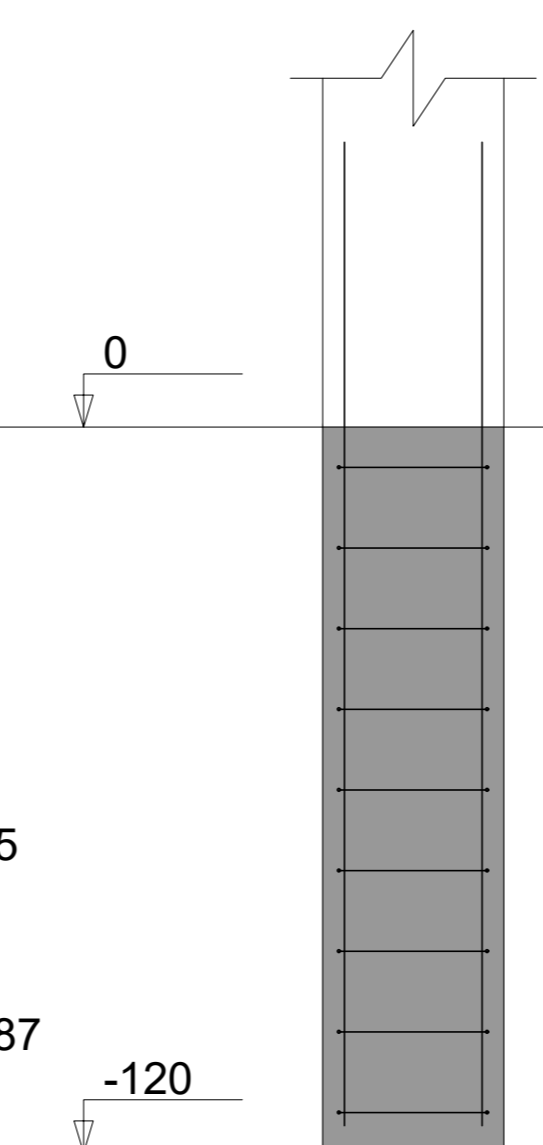
FUNDAÇÃO - L1

SEÇÃO
ESC 1:20

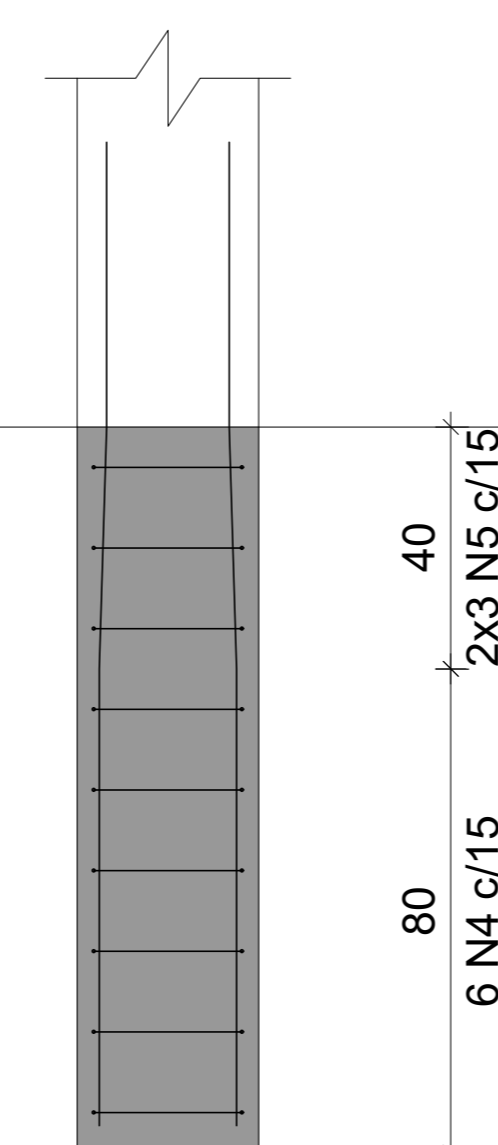


6 N4 ø5.0 C=111 2x3 N5 ø5.0 C=87

VISTA H
ESC 1:25



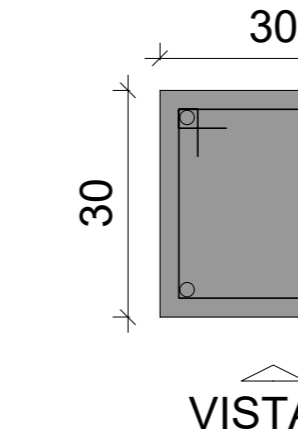
VISTA B
ESC 1:25



P63=P65=P66=P67

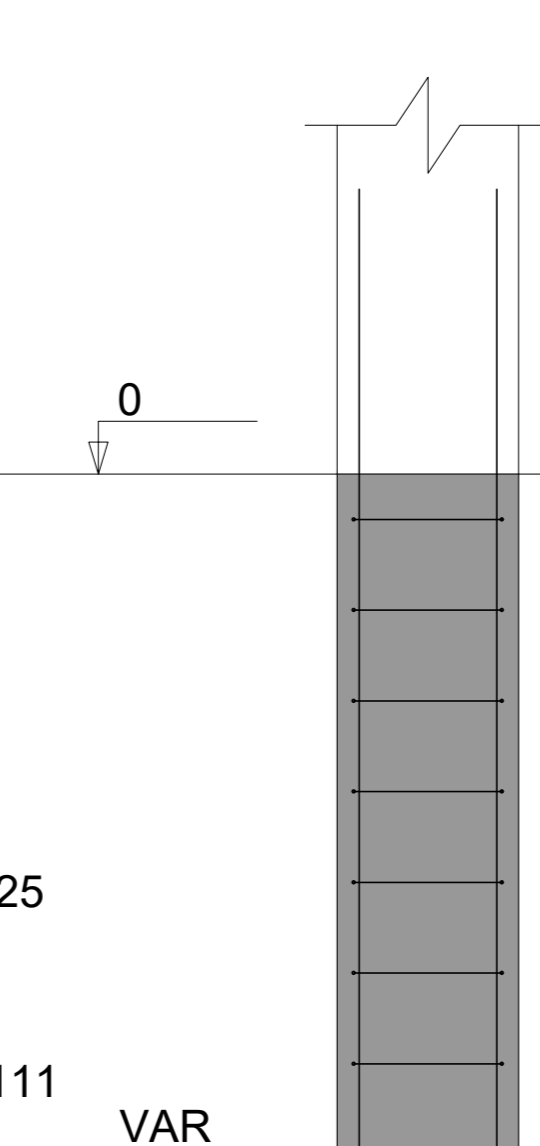
FUNDAÇÃO - L1

SEÇÃO
ESC 1:20

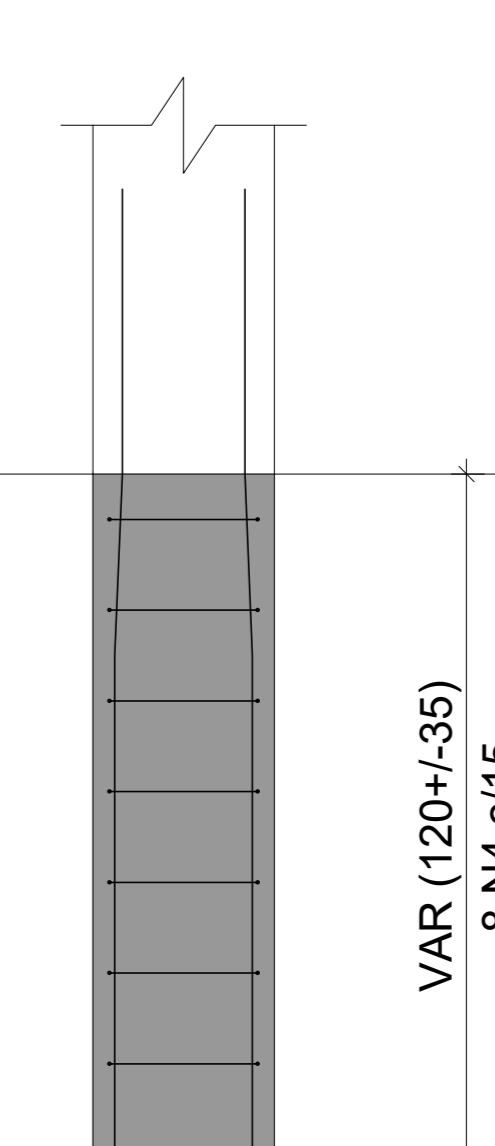


8 N4 ø5.0 C=111

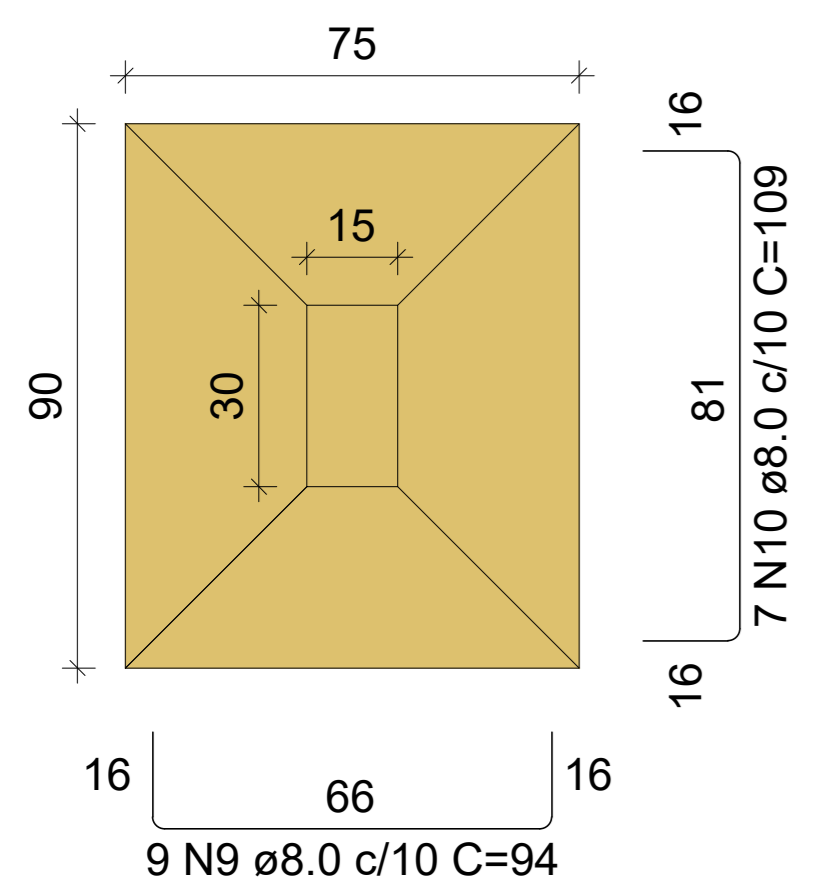
VISTA H
ESC 1:25



VISTA B
ESC 1:25

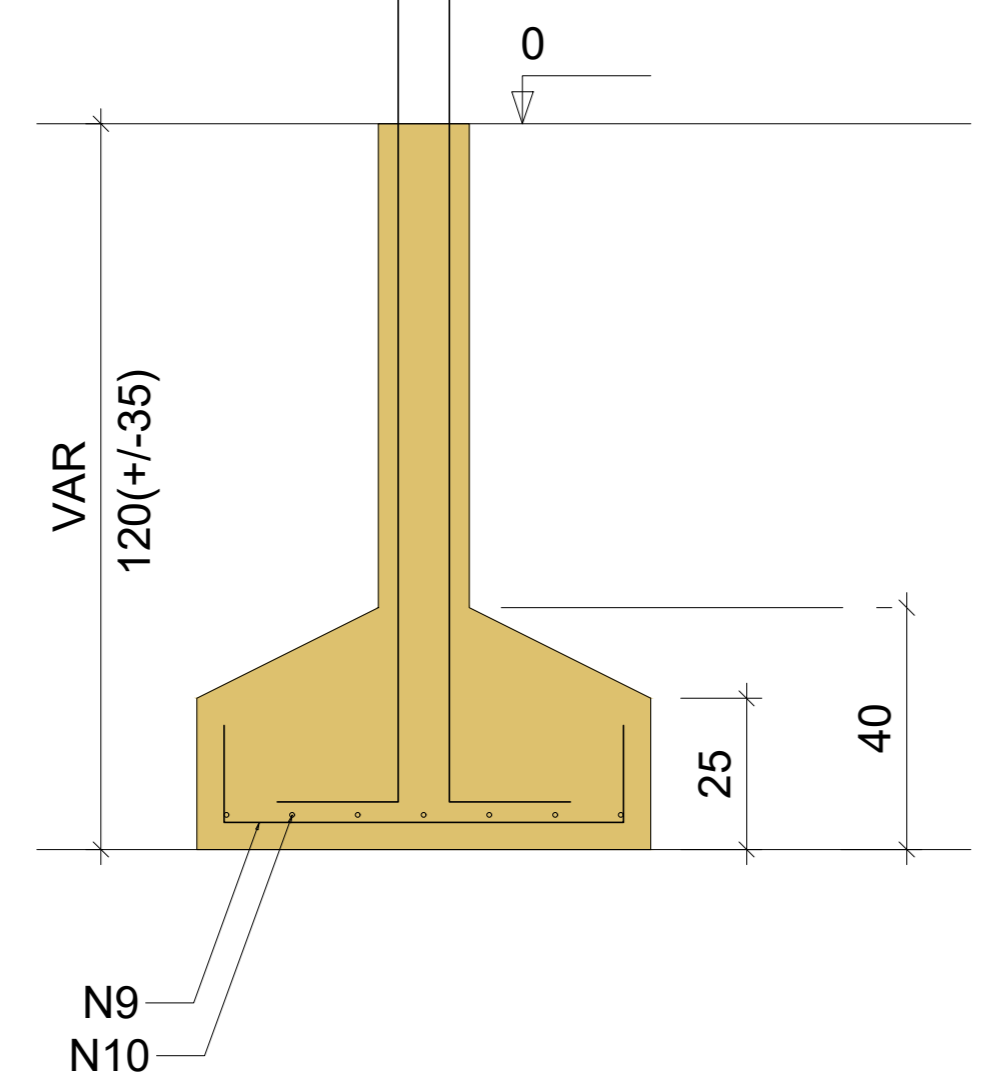


S23=S49
PLANTA
ESC 1:25



Solo com capacidade de suporte > 1.00 kgf/cm²
Solo compactado sobre a sapata
peso específico > 1600.00 kgf/m³

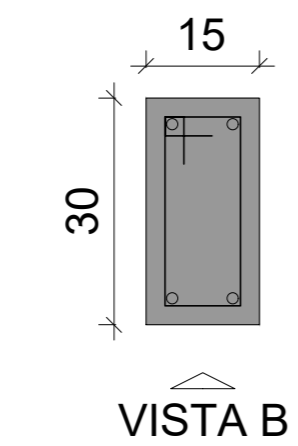
CORTE
ESC 1:25



P23=P49

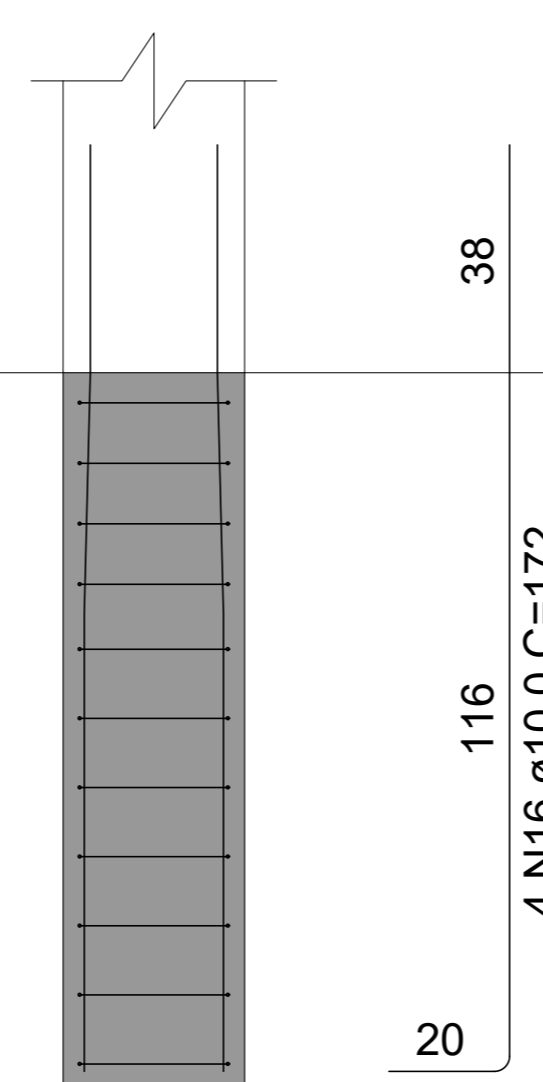
FUNDAÇÃO - L1

SEÇÃO
ESC 1:20

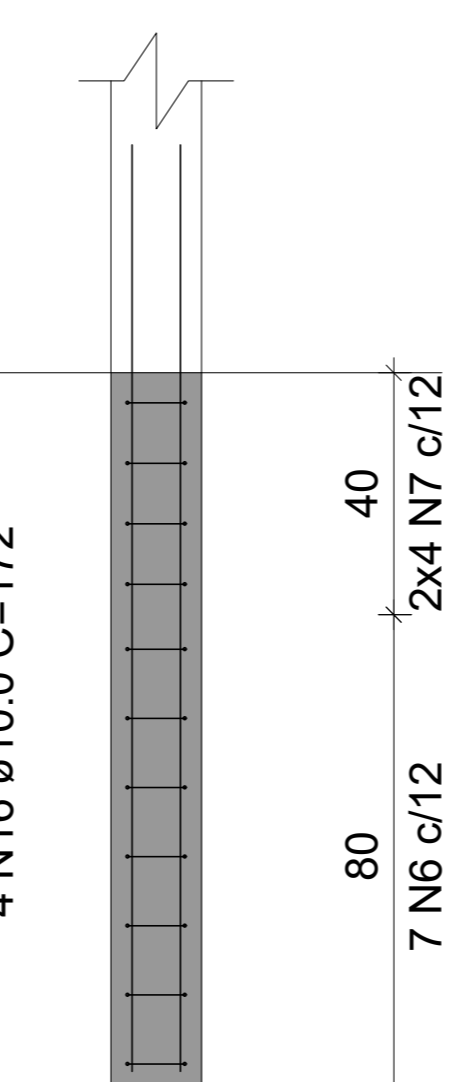


7 N6 ø5.0 C=81 2x4 N7 ø5.0 C=57

VISTA H
ESC 1:25



VISTA B
ESC 1:25



06.00 SAPATAS - ARMADURAS
ESCALA 1/E

REVISÃO Nº	PROJETO ESTRUTURAL	DESCRIÇÃO
PROJETO	CENTRO DE INOVAÇÃO E DIFUSÃO DE TECNOLOGIAS PARA O SEMIÁRIDO (CIDTS) - CAMPUS BOA VIAGEM	
CLIENTE	IFCE CAMPUS DE BOA VIAGEM - CE	
LOCAL	MUNICÍPIO DE BOA VIAGEM - CE	REGIÃO
CONTEÚDO	SAPATAS - ARMADURAS	RESPONSÁVEL TÉCNICO
		GEORDANO CARVALHO
		PROJETOS E ARMAZENAS
		GEORDANO PINHEIRO
		DESENHISTA
		GEORDANO PINHEIRO
DATA	OUTUBRO/2024	ESCALA
		INDICADA
ARQUIVO	P6_7_SAPATAS.dwg	
		FOLHA
		06/28